



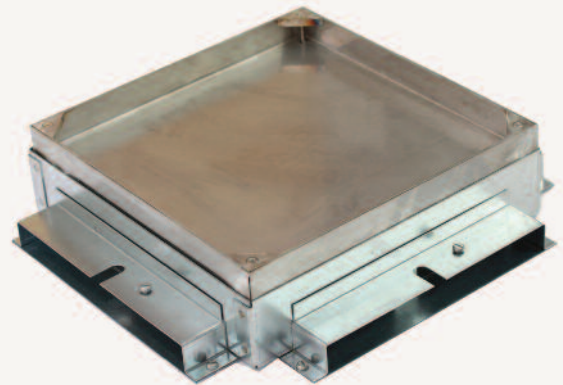
#### Why in screed trunking?

A cost effective screed trunking designed to be laid prior to the screed being installed that sits within the screed.

- Trunking is quick and easy to install. No exact levelling of the trunking is required. Service outlet and junction boxes to suit
- Steel thickness can be reduced as the trunking is not taking structural load

We stock a range to suit any screed from 55mm

- Easily adaptable to existing screed installations
- A range of sizes available ex-stock, 2 or 3 compartment
- Compatible with all of our service outlet boxes
- The range is simple to install, with four basic components:
  - Trunking
  - Service outlet boxes
  - Junctions
  - Vertical access
- Suitable for screeds of 55mm or more



#### Box size

- U3 junction has a top frame size of 300mm square, and outer base box size 310mm
- U2 junction has a top frame size of 200mm square, and outer base box size 210mm
- Bespoke boxes can be made to any size

Box Length

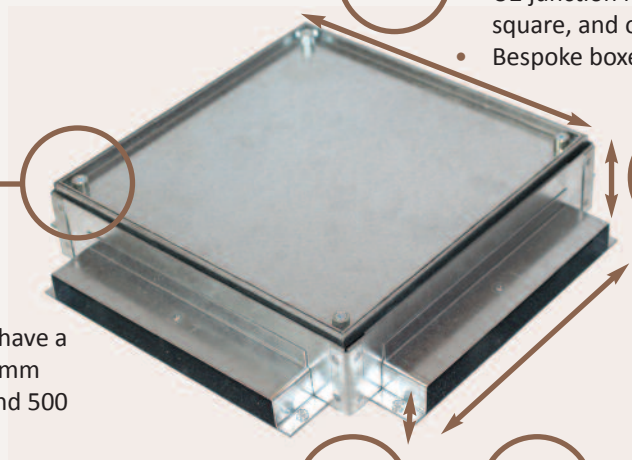
#### Screed depth

- Junction boxes and service outlet boxes ordered to suit the minimum expected height of the screed
- Height can be adjusted prior to laying the floor

Box Height

#### Lid options

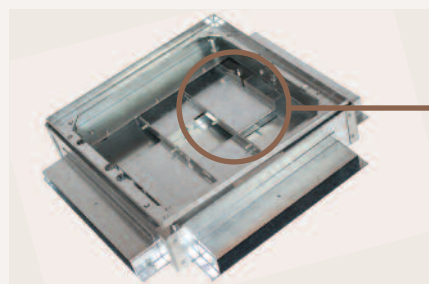
- Junction boxes as standard have a galvanised steel lid with a 6mm recess to match the 2000 and 500 series floor boxes.
- Stainless steel or brass boxes with deeper recesses are available to match the 700 series floor boxes
- All of our floor box ranges can be made to suit in screed trunking



Trunking height Y

Trunking width X

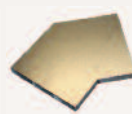
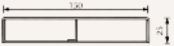
Any size can be specified by giving us trunking width (X), trunking height (Y) and the number of compartments.



#### Junction box access and segregation

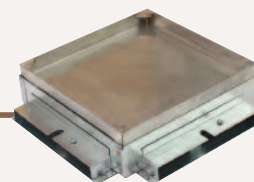
- All junction boxes are supplied with a height adjustable inner frame, and flyover sets for segregation

Stock ranges of in screed trunking, including part references

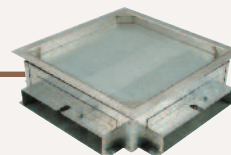
							
		Ref 91 2m length	Ref 92 Vertical bend	Ref 93 Flat bend	Ref 94-98+ Junction box	Ref 38 End cap	Ref 45 45deg bend
	U2 - 2 equal compartment -150 x 25mm	U2-91	U2-92	U2-93	U2-94 (cross) U2-95 (tee) U2-96 (angle) U2-97 (through) U2-98 (terminal)	U2-38	U2-45
	U3 -3 equal compartment -225 X 25mm	U3-91	U3-92	U3-93	U3-94 (cross) U3-95 (tee) U3-96 (angle) U3-97 (through) U3-98 (terminal)	U3-38	U3-45

The junction boxes are fitted with a height adjustable inner frame to enable on site adjustment after the screed has been laid to level the top of the lid with the top of the finished floor level. As standard, junction boxes are provided with a galvanised steel lid and frame with a 6mm recess, fitted with M8 bushes for fixing the lid to the box and to allow future lifting. As an optional extra, they can be fitted with a stainless steel lid and standard frame (no trim) or a stainless steel trim frame. These lid are fitted with stainless steel corner blocks instead of bushes.

For a stainless steel lid and (no trim) frame please add the suffix ST to your order, for example U3-94-ST - 65mm deep



For a stainless steel lid with trim flange, please add the suffix ST-FLANGE to your order, for example U3-94-ST-FLANGE - 65mm deep



### Underfloor in screed trunking installation guide

- 1) order the floor boxes and junction boxes to your lowest anticipated screed height.
- 2) position the floor boxes and junction boxes according to the required layout and mount to the sub floor.
- 3) Connect the trunking body to the junctions and floor boxes by inserting through the box connecting sleeve, cutting any trunking lengths as required.
- 4) Connect the vertical bends as wall connections.
- 5) Cables may then be placed into the open trunking from above. It is a good idea to add pull wires at this stage for any future cable changes.
- 6) Place the trunking lids on to the bodies.
- 7) Tighten the joint cover sleeves at the junction and floor boxes and between the lengths of trunking. Add a single width clamp to the middle of a length of trunking. The joint cover sleeve is fitted with 2 bushes to enable linking of a ref C41 copper earth bar

### 8) Screed

† all junction boxes are made to a height to suit your screed depth. If not height is specified a default height of 65mm will be provided.

